

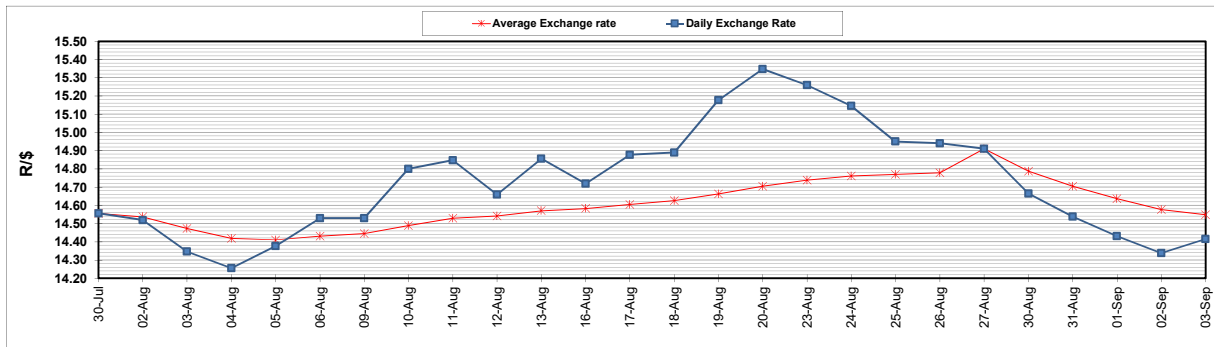
	PETROL 95 ULP	PETROL 93 ULP & LRP	DIESEL 0.05%	DIESEL 0.005%	ILL. PAR.
GAUTENG PUMP PRICE (SA c/l) AS FROM 01/09/2021	1,834.000	1,815.000	-	-	-
WHOLESALE PRICE (SA c/l) AS FROM 01/09/2021	-	-	1,548.980	1,552.380	948.488
SINGLE NATIONAL MAXIMUM RETAIL PRICE	-	-	-	-	1,197.000
BASIC FUEL PRICE - 03/09/2021 (SA c/l)	809.388	797.081	753.468	757.029	742.504
PRESS RELEASE CONTRIBUTION TO BFP 01/09/2021 - 03/09/2021 (SA c/l)	817.110	808.110	746.630	750.030	735.128
UNIT OVER/(UNDER) RECOVERY - 03/09/2021 (SA c/l)	7.722	11.029	(6.838)	(6.999)	(7.376)
AVERAGE BASIC FUEL PRICE 27/08/2021 - 03/09/2021	797.630	785.286	744.655	747.652	738.475
AVERAGE UNIT OVER/(UNDER) RECOVERY 27/08/2021 - 03/09/2021	24.720	28.064	13.975	13.878	4.153

ANALYSIS MOVEMENT OF AVERAGE OVER/(UNDER) RECOVERY

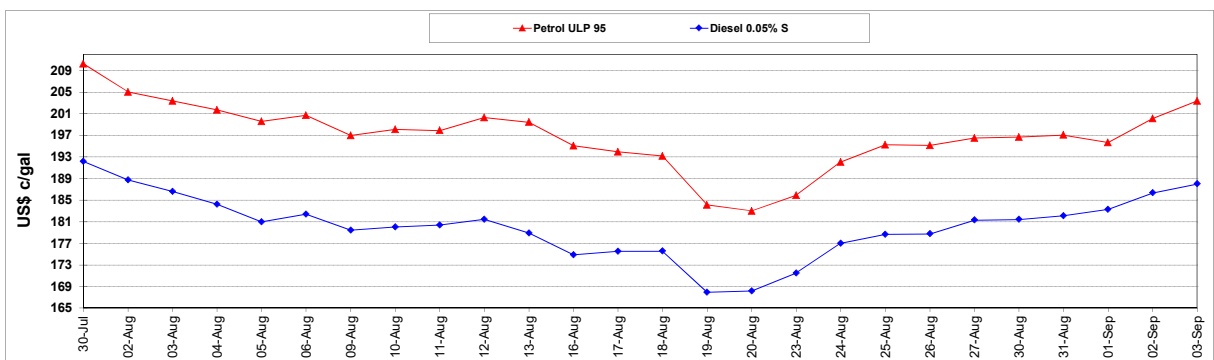
	PETROL 95	PETROL 93	DIESEL 0.05%	DIESEL 0.005%	ILL. PAR.
- MOVEMENT IN INTERNATIONAL PRODUCT PRICES	12.133	15.672	2.224	2.080	(7.501)
- MOVEMENT IN EXCHANGE RATE	12.587	12.392	11.751	11.798	11.654
AVERAGE UNIT OVER/(UNDER) RECOVERY 27/08/2021 - 03/09/2021	24.720	28.064	13.975	13.878	4.153

R/\$ EXCHANGE RATE - (R/\$14.4153 - 03/09/2021)

EXCHANGE RATE USED IN BASIC FUEL PRICE



INTERNATIONAL PRODUCT PRICES OF BASKET USED IN BASIC FUEL PRICE



BASIC FUEL PRICE IN SA CENTS PER LITRE

